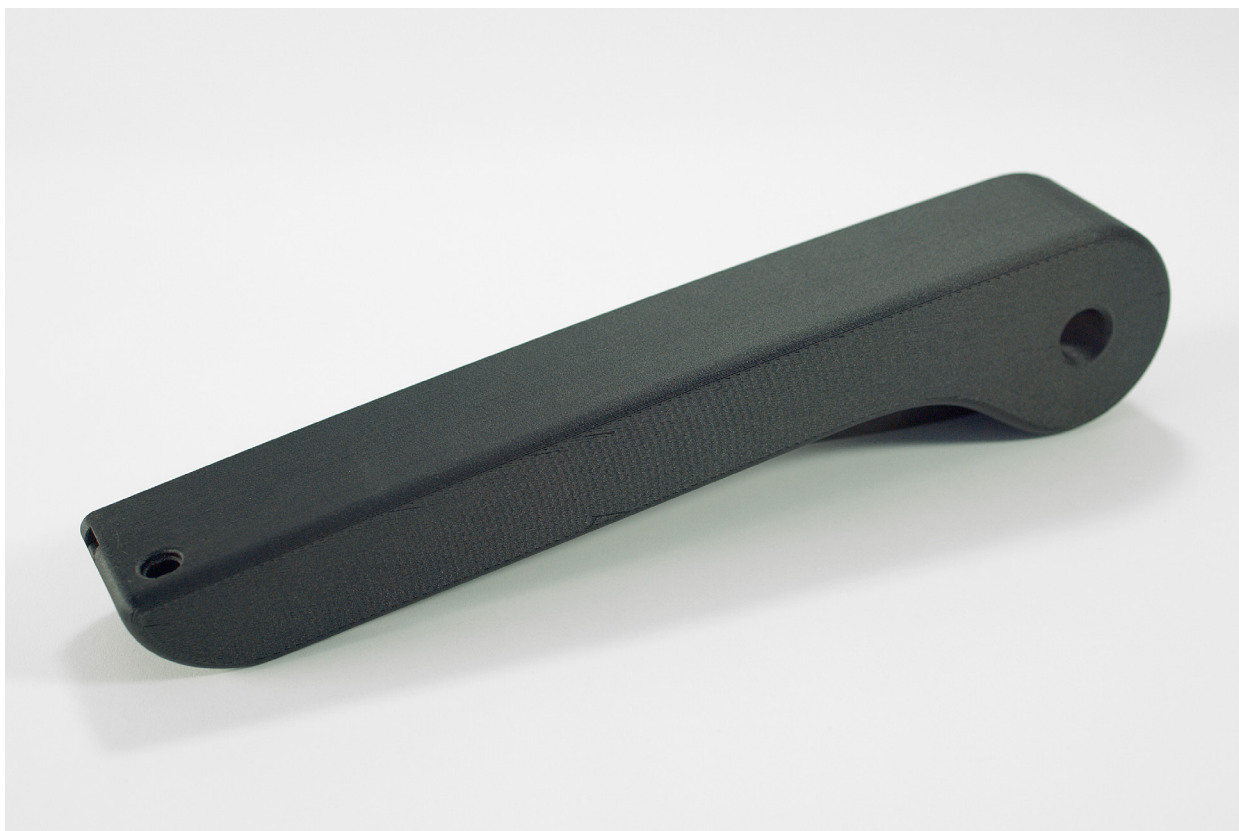


Addigy[®] PA6/66-GF20 FR LS



FDM[®] Thermoplastic Filament

The information presented are typical values intended for reference and comparison purposes only. They should not be used for design specifications or quality control purposes.



Overview

Addigy PA6/66-GF20 FR LS is a 20% glass-filled nylon polymer with fire-resistant, low-smoke properties and low levels of toxic fume emissions. PA6/66-GF20 FR LS complies with industry standards EN 45545-2, NFPA 130, SMP 800-C and FAR 25.853, making it a desirable material for transportation industry applications.

Contents:

Ordering Information	3
Physical Properties	3
Mechanical Properties	4

Ordering Information

Part Number	Description
Filament Canisters	
355-70020	PA6/66-GF20 FR LS, 92 cu in. - Fortus Plus
355-70090	SUP4000B, 92 cu in. - Fortus Plus
Printer Consumables	
511-10745	T20G tip
511-10401	T16 tip
325-00750-S	Nylon build sheet, 0.02 x 16 x 18.5 in. (0.51 x 406 x 470 mm)

Physical Properties

Property	Test Method	Typical Values	
		XY	XZ/ZX
Melting Point	ISO 11357, DSC	195 °C (383 °F)	

Data provided by Covestro.

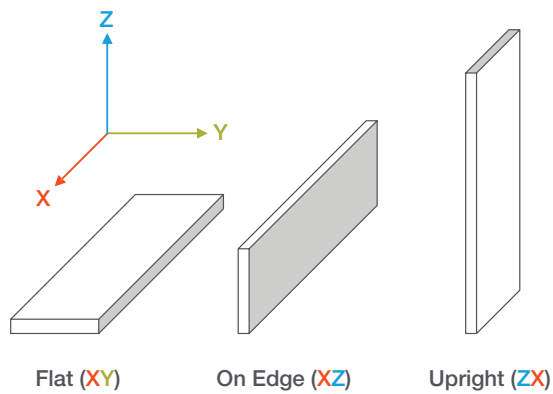
DSC = differential scanning calorimetry at 10°C/minute.

Mechanical Properties

Samples were printed with 0.010 in. (0.254 mm) layer heights on the Fortus 450mc. For the full test procedure please see the [Stratasys Materials Test Procedure](http://www.stratasys.com) on www.stratasys.com.

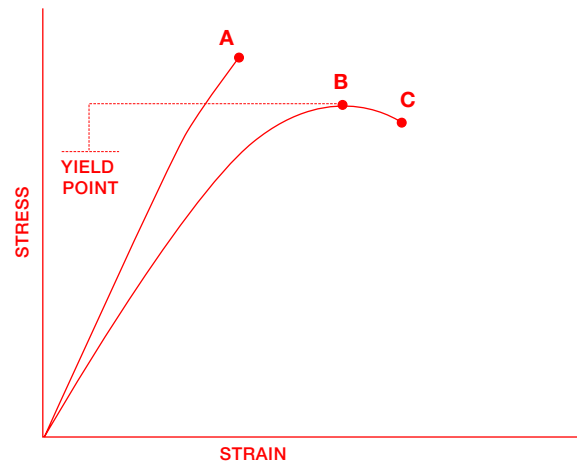
Print Orientation

Parts created using FDM are anisotropic as a result of the printing process. Below is a reference of the different orientations used to characterize the material.



Tensile Curves

Due to the anisotropic nature of FDM, tensile curves look different depending on orientation. Below is a guide of the two types of curves seen when printing tensile samples and what reported values mean.



A = Tensile at break, elongation at break (no yield point)

B = Tensile at yield, elongation at yield

C = Tensile at break, elongation at break

		XZ Orientation ¹	ZX Orientation ¹
Tensile Properties: ASTM D638			
Yield Strength	MPa	50.7 (2.0)	No yield
	psi	7350 (290)	No yield
Elongation @ Yield	%	3.5 (0.21)	No yield
	MPa	50.0 (2.1)	24.7 (1.7)
Strength @ Break	psi	7250 (300)	3580 (250)
	%	4.0 (0.31)	1.6 (0.33)
Elongation @ Break	GPa	4.14 (0.18)	2.60 (0.43)
	ksi	601 (26)	377 (62)
Flexural Properties: ASTM D790, Procedure A			
Peak Stress	MPa	105 (1.0)	51.8 (1.2)
	psi	15300 (150)	7510 (180)
Modulus	GPa	5.10 (0.097)	2.36 (0.038)
	ksi	740 (14)	343 (5.5)
Impact Properties: ASTM D256, ASTM D4812			
Notched	J/m	58.0 (3.3)	21.4 (3.1)
	ft*lb/in.	1.09 (0.062)	0.401 (0.058)
Unnotched	J/m	279 (28)	77.9 (15)
	ft*lb/in.	5.23 (0.53)	1.46 (0.28)

¹ Values in parenthesis are standard deviations.

USA - Headquarters

7665 Commerce Way
Eden Prairie, MN 55344, USA
+1 952 937 3000

ISRAEL - Headquarters

1 Holtzman St., Science Park
PO Box 2496
Rehovot 76124, Israel
+972 74 745 4000

stratasys.com

ISO 9001:2015 Certified

EMEA

Airport Boulevard B 120
77836 Rheinmünster, Germany
+49 7229 7772 0

ASIA PACIFIC

7th Floor, C-BONS International Center
108 Wai Yip Street Kwun Tong Kowloon
Hong Kong, China
+ 852 3944 8888



GET IN TOUCH.

www.stratasys.com/contact-us/locations

laserlines

01295 672500

3dworld@laserlines.co.uk

www.3dprinting.co.uk